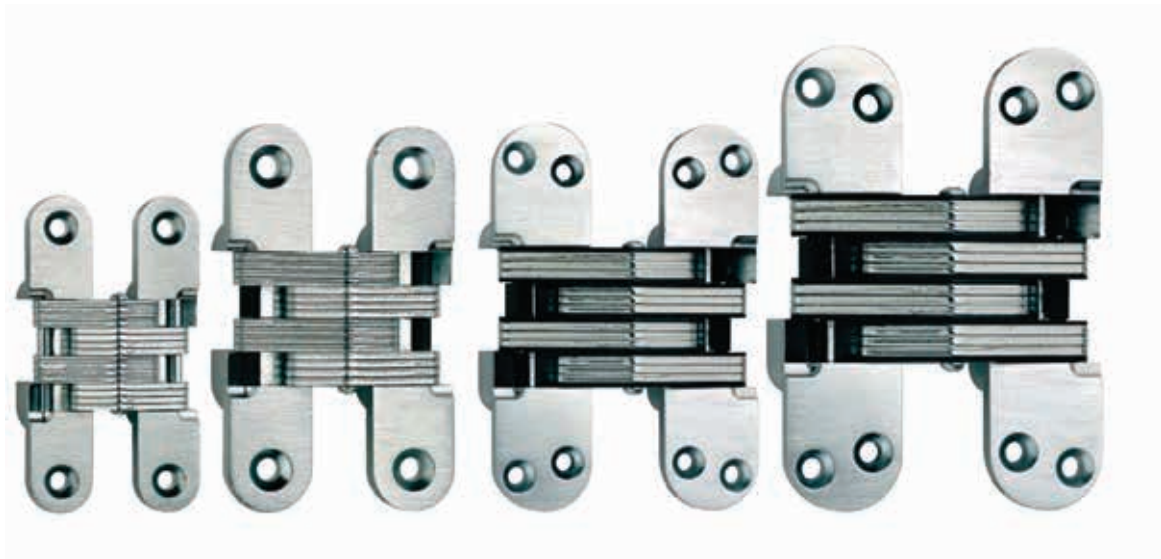


Invisible and adjustable hinge



CHS001

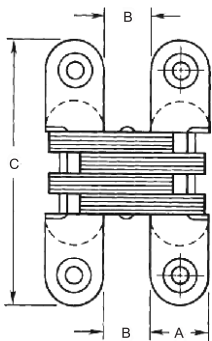
CHS002

CHS003

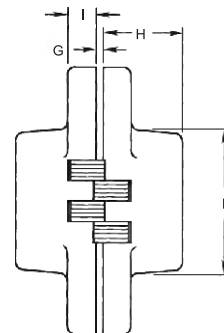
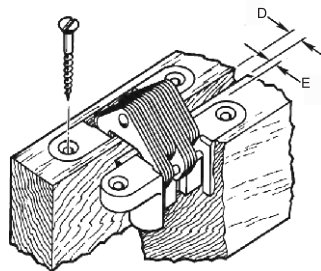
CHS004

MATERIAL:Stainless steel or steel

Dimension	CHS001	CHS002	CHS003	CHS004
A	19mm	25.40mm	28.2mm	34.7mm
B	13.1mm	18.4mm	22.7mm	25.3mm
C	95mm	117.2mm	117.2mm	140.2mm
D	3.97mm	5.56mm	9.53mm	12.70mm
E	4.76mm	6.35mm	6.35mm	7.14mm
F	51.7mm	64.8mm	61.7mm	80.65mm
G	1.5mm	2.5mm	2.5mm	2.5mm
H	27.3mm	37mm	40.5mm	49.5mm
I	8.9mm	11.7mm	10mm	11.7mm



Key to Dimensions Shown in Charts



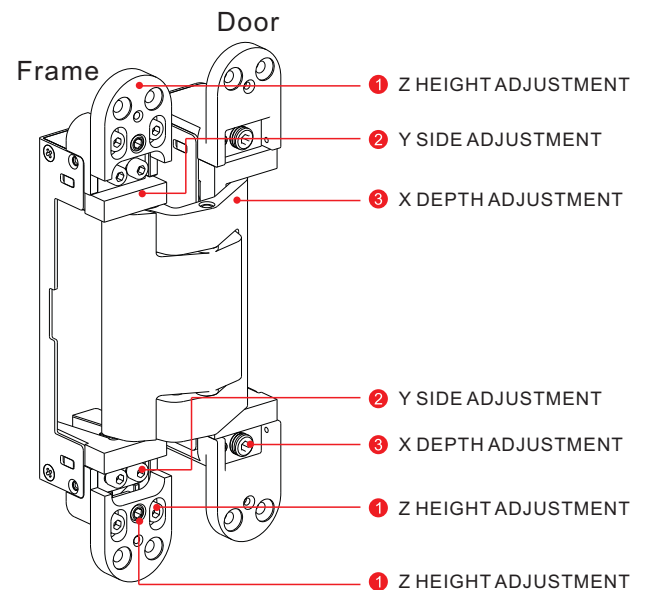
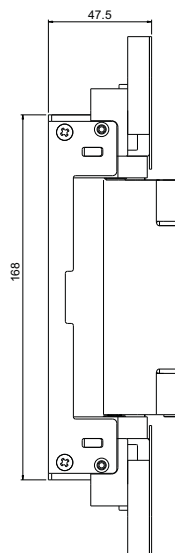
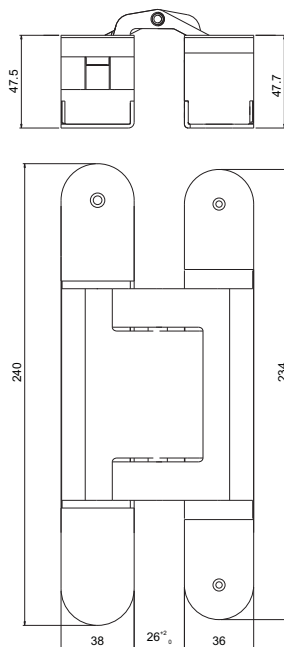
All hinges are shipped with the proper size wood screws, unless ordred without.
Do not exceed "E" dimension.

CHS300 , 3D ADJUSTABLE INVISIBLE HINGE

Applicable area : wood , casting , steel and aluminum frames

Material : all components are made by stainless steel 304

CHS300	
Door	Wood door, steel door, profile door, folding door
Load capacity	300kg
Standard	DIN EN 1935:2016
Length	240mm
Min. Door Thickness:	Not less than 45mm
Opening Angle	Up to 180 degree
Continuously Adjustable in 3-Dimensions	Side: + / - 3mm Height: + / - 3mm Depth: + / - 1mm
Handed	Non handed design
Material	SUS304
finish	SS, PS, AB, PVD
Quantity for single door	2pcs
The 3rd hinge will increase 20% loading Please refer to the instruction	

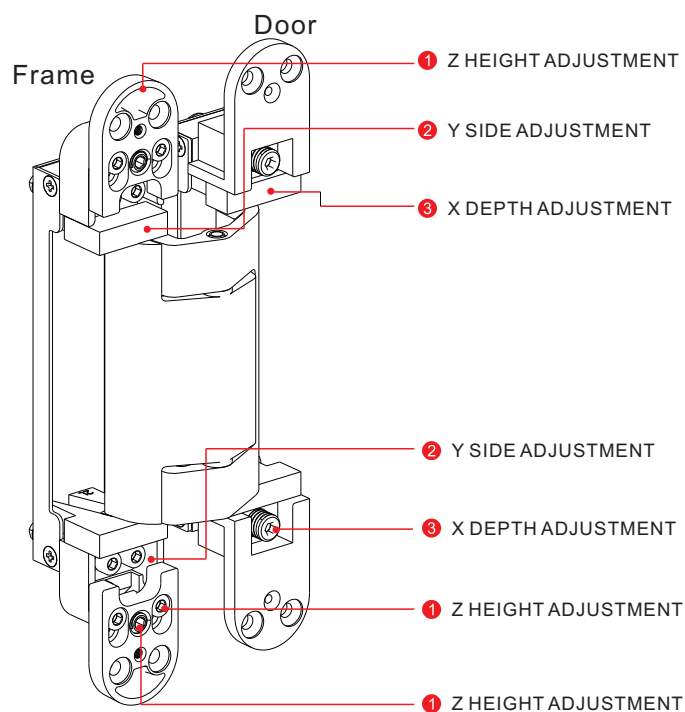
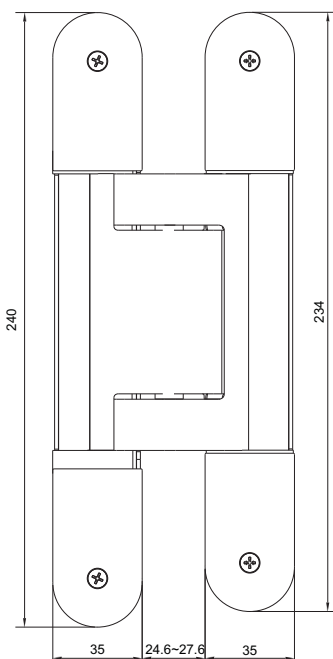
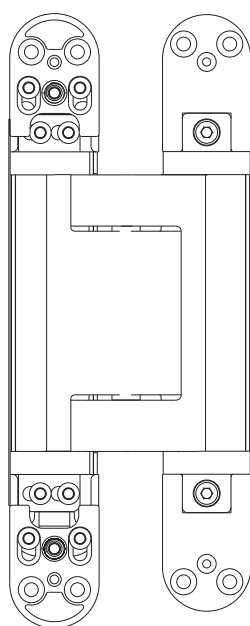
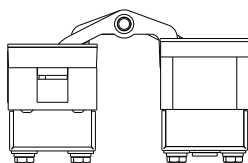


CHS310, 3D ADJUSTABLE INVISIBLE HINGE

Applicable area: wood, casting, steel and aluminum frames

Material: all components are made by stainless steel 304

CHS310	
Door	Wood door, steel door, profile door, folding door
Load capacity	200kg
Standard	DIN EN1935:2016
Length	240mm
Min. Door Thickness:	Not less than 45mm
Opening Angle	Up to 180 degree
Continuously Adjustable in 3-Dimensions	Side : + /- 3 mm Height : + /- 3 mm Depth : + /- 1.5mm
Handed	Non handed design
Material	SUS304
finish	SS, PS , AB, PVD
Quantity for single door	2pcs
The 3rd hinge will increase 20% loading Please refer to the instruction	

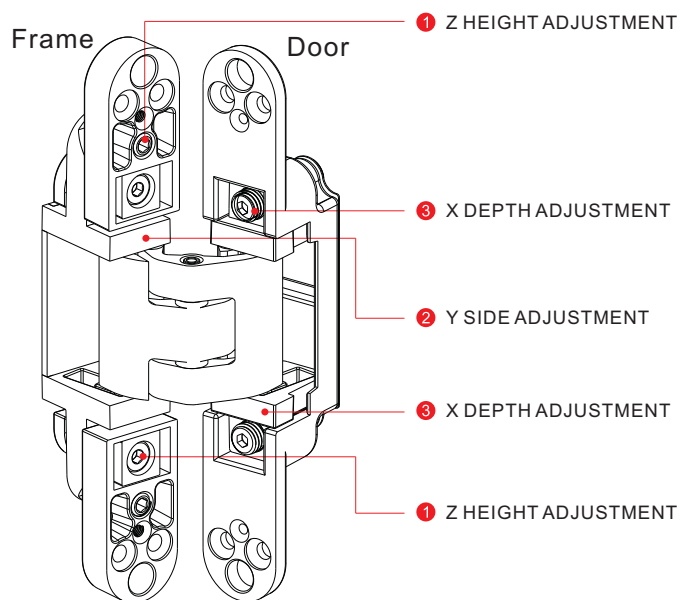
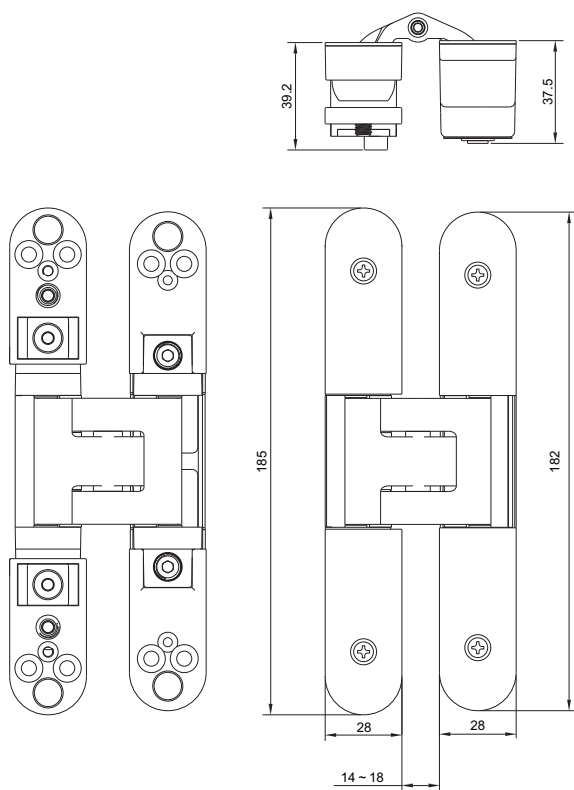


CHS320, 3D ADJUSTABLE INVISIBLE HINGE

Applicable area: wood, casting, steel and aluminum frames

Material: all component are made by stainless steel 304

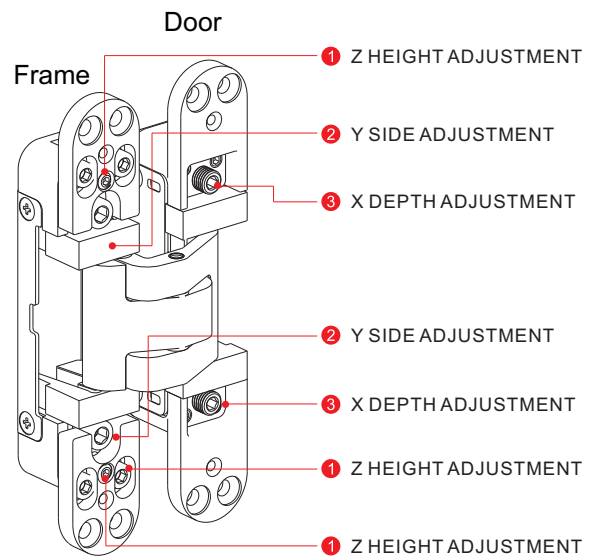
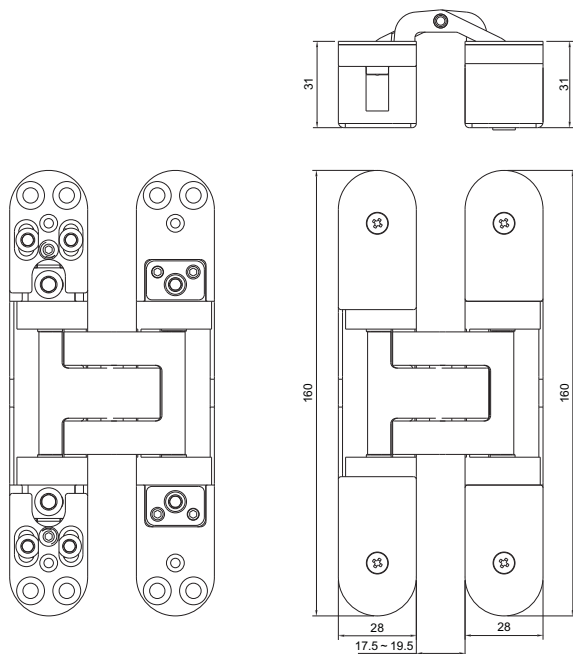
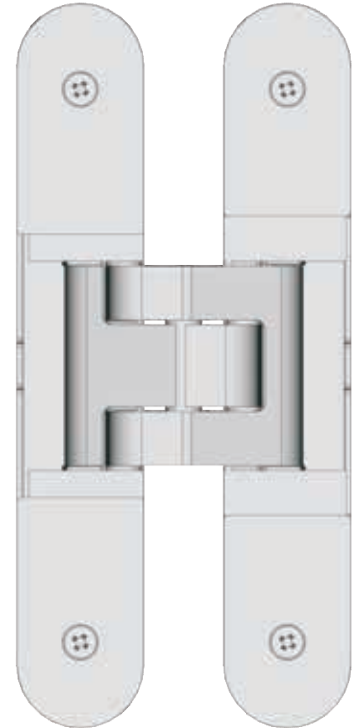
CHS320	
Door	Wood door, steel door, profile door, folding door
Load capacity	120kg
Standard	DIN EN1935:2016
Length	155mm
Min. Door thickness:	Not less than 35mm
Opening angle	Up to 180 degree
Continuously adjustable In 3-dimensions	Side : + / - 3 mm Height : + / - 3 mm Depth : + / - 2mm
Handed	No handed design
Material	SUS304
Finish	SS, PS, AB, PVD
Quantity for single door	2pcs
The 3rd hinge will increase 20% loading Please refer to the instruction	



CHS340, 3D ADJUSTABLE INVISIBLE HINGE

Applicable area: wood, casting, steel and aluminum frames
Material: all component are made by stainless steel 304

CHS340	
Door	Wood door, steel door, profile door, folding door
Load capacity	80kg
Standard	DIN EN1935:2016
Length	160mm
Min. Door thickness:	Not less than 35mm
Opening angle	Up to 180 degree
Continuously adjustable In 3-dimensions	Side: ± 1 mm Height: ± 3 mm Depth: ± 3 mm
Handed	No handed design
Material	SUS304
Finish	SS, PS, AB, PVD
Quantity for single door	2pcs
The 3rd hinge will increase 20% loading Please refer to the instruction	

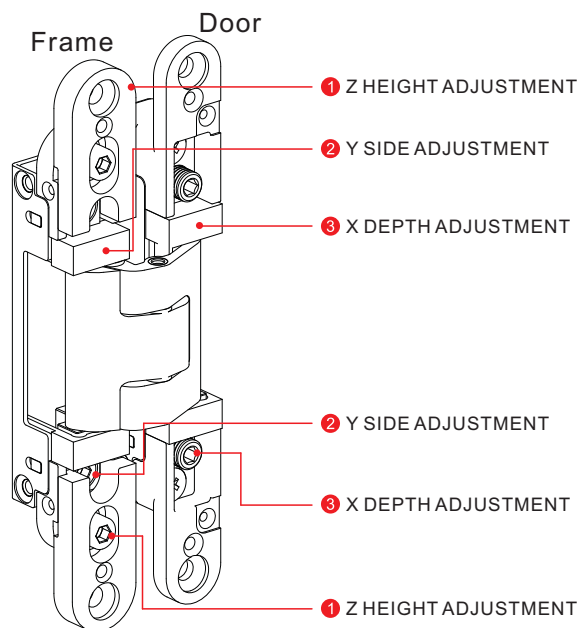
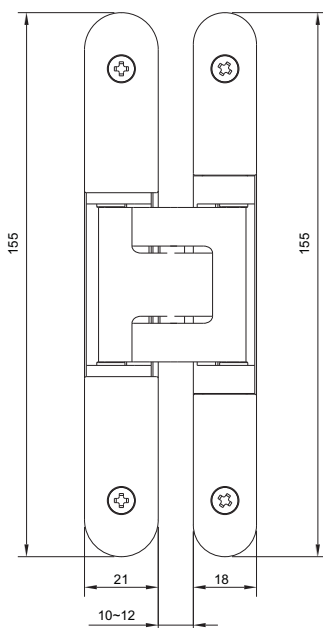
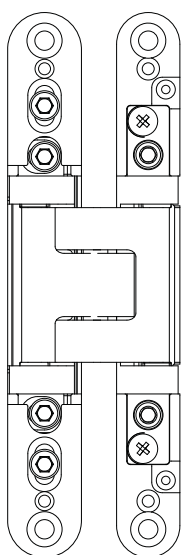
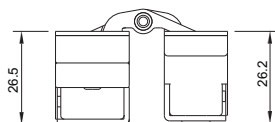


CHS350 , 3D ADJUSTABLE INVISIBLE HINGE

Applicable area : wood , casting , steel and aluminum frames

Material : all components are made by stainless steel 304

CHS350	
Door	Wood door, steel door, profile door, folding door
Load capacity	60kg
Standard	DIN EN 1935:2016
Length	155mm
Min.Door Thickness:	Not less than 35mm
Opening Angle	Up to 180 degree
Continuously Adjustable in 3-Dimensions	Side: + / - 3mm Height: + / - 3mm Depth: + / - 1mm
Handed	Non handed design
Material	SUS304
finish	SS,PS,AB,PVD
Quantity for single door	2pcs
The 3rd hinge will increase 20% loading Please refer to the instruction	

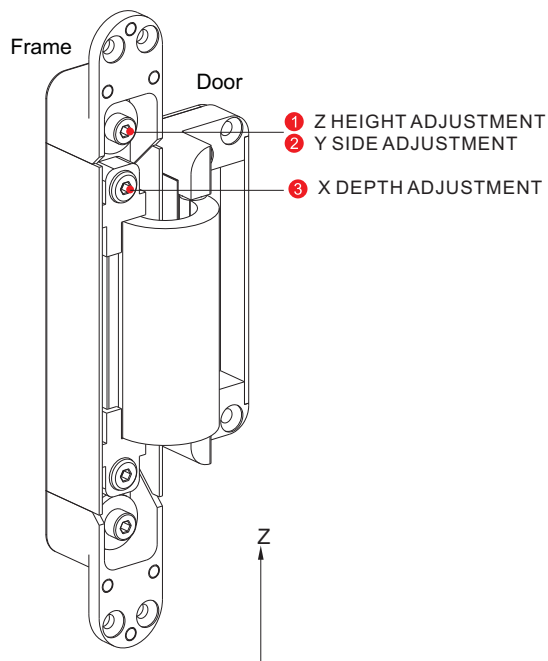
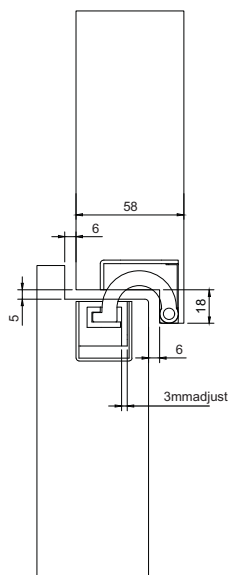
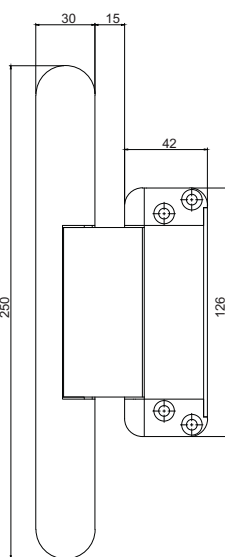
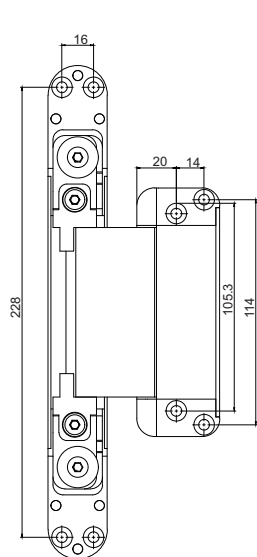
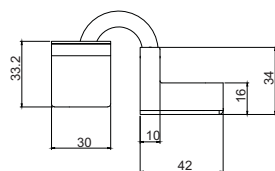


CHS430 , 3D ADJUSTABLE INVISIBLE HINGE

Applicable area : wood , casting , steel and aluminum frames

Material : all components are made by stainless steel 304

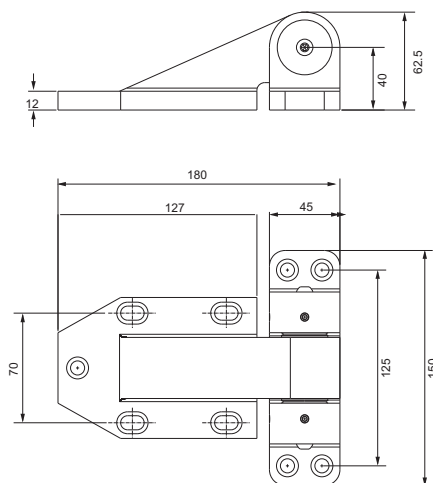
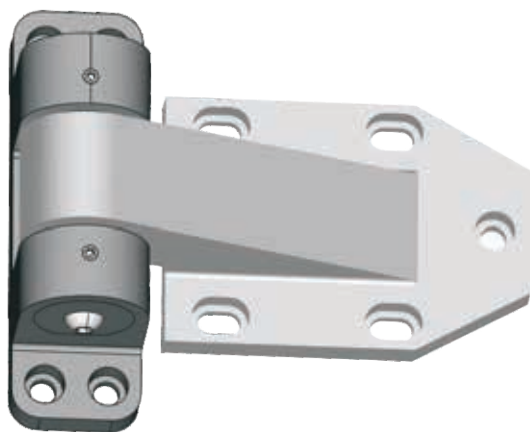
CHS430	
Door	Wood door, steel door, profile door, folding door
Load capacity	160kg
Standard	DIN EN 1935:2016
Length	250mm
Min. Door Thickness:	Not less than 40mm
Opening Angle	Up to 180 degree
Continuously Adjustable in 3-Dimensions	Side: + / - 3mm Height: + / - 3mm Depth: + / - 1.5mm
Handed	Non handed design
Material	SUS304
finish	SS, PS, AB, PVD
Quantity for single door	2pcs
The 3rd hinge will increase 20% loading Please refer to the instruction	



SU800

Surface mounted casting hinges

1. Door Weight up to 300kg(3 pieces)
2. Adjustable depth and side
3. Stainless steel 304



Offset pivot

ADL120 Center Pivot

Suitable for wooden doors and steel doors

1. Compliance with:

A) ANSI/BHMAA156.4, grade 1

B) UL10C, 3 hours fire rated

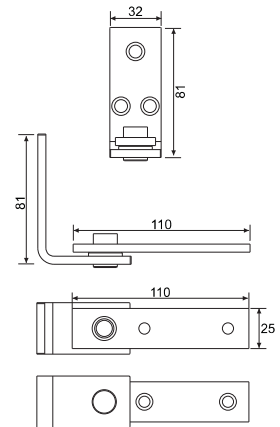
2. Load capacity: 270lbs (120KG)

3. Non handed.

4. Minimum door thickness: 45mm

5. Material: stainless steel 304

6. Finish: SS, PS, PVD



ADL250 Center Pivot

Suitable for wooden doors and steel doors

Precision bearings for smooth operation with dust proof

1. Compliance with:

A) ANSI/BHMAA156.4, grade 1

B) UL10C, 3 hours fire rated

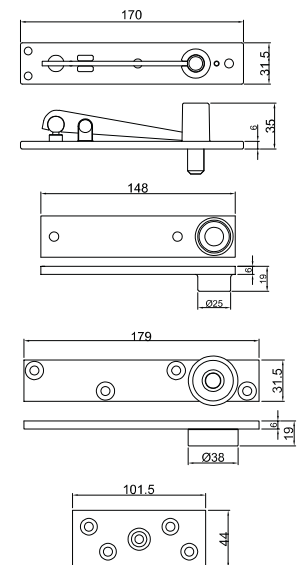
2. Load capacity: 500lbs (250KG)

3. Non handed.

4. Minimum door thickness: 45mm

5. Material: stainless steel 304

6. Finish: SS, PS, PVD



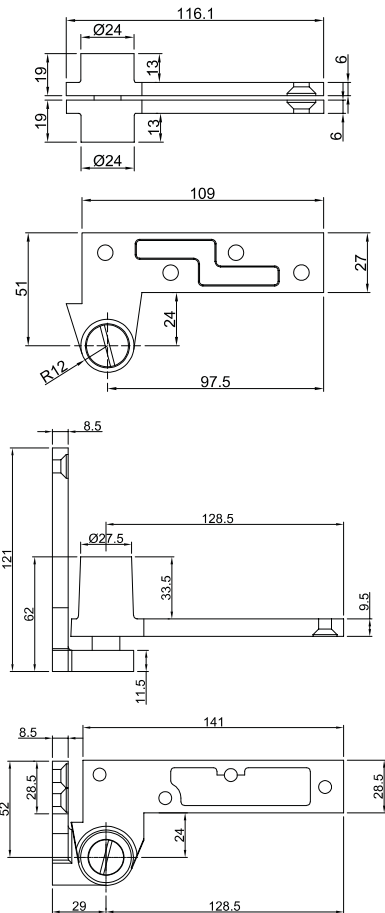
AD200-RH/LH offset pivot

Suitable for wooden doors and steel doors
Precision bearings for smooth operation with dust proof.



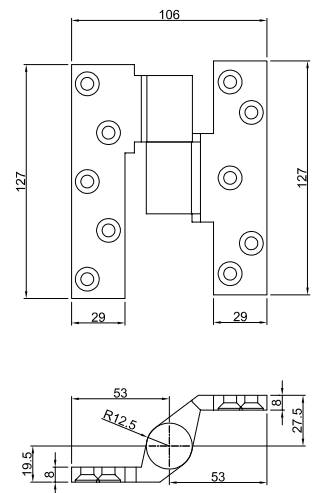
Certificate:
ANSI/BHMA 156.4, Grade 1.

1. Load capacity: 550 pounds (250KGS)
2. Adjustable for 4.5mm in vertical direction.
3. Handed
4. Minimum door thickness: 45mm
5. Material: stainless steel (SUS 304)
6. Finish: SSS, PVD, PS
7. Notes:
 - A) Doors up to 90" (2286mm) in height should use one intermediate pivot.
 - B) Each additional 30" (762mm) warrants another intermediate pivot.
 - C) NFPA 80, Section 3-3.8 requires intermediate pivot on fire door applications.
 - D) Use for door weight over the pivot set limit.
One additional intermediate pivot for every additional 100lbs(45kg).



AD200-2-RH/LH, Intermediate pivot

Handed
Use with AD200
Vertical adjustment 4.5mm, includes positive locking
Material: stainless steel (SUS 304)



AD300 offset pivot

Suitable for wooden doors and steel doors
Precision bearings for smooth operation with dust proof.



EN12211

Certificate:

A) ANSI/BHMA A156.4, grade 1

B) EN12211, 6000Pa

1. Load capacity: 700 pounds (320KGS)
2. Adjustable for 4.5mm in vertical direction.
3. Non handed
4. Minimum door thickness: 45mm
5. Material: stainless steel (SUS 304)
6. Finish: SSS, PVD, PS
7. Notes:

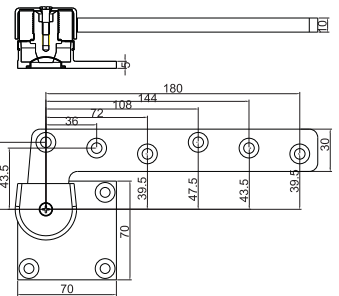
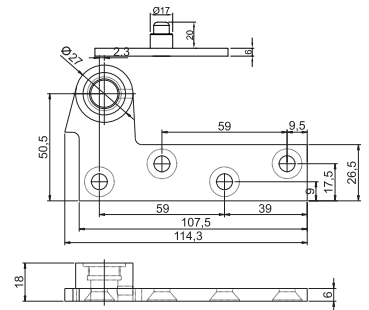
A) Doors up to 90" (2286mm) in height should use one intermediate pivot.

B) Each additional 30" (762mm) warrants another intermediate pivot.

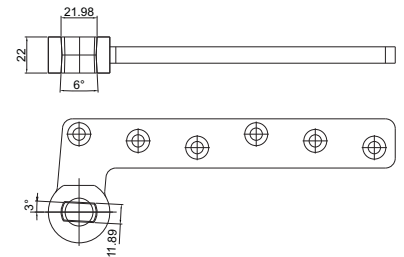
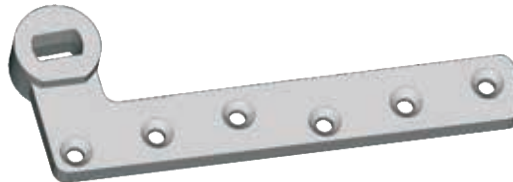
C) NFPA 80, Section 3-3.8 requires intermediate pivot on fire door applications.

D) Use for door weight over the pivot set limit.

One additional intermediate pivot for every additional 100lbs(45kg).



AD300-FS
For floor spring



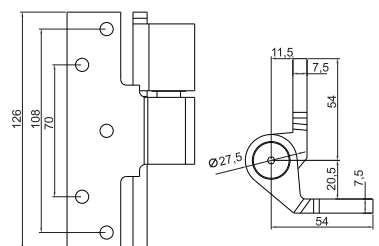
AD300-2 intermediate pivot

Material: stainless steel (SUS 304)

Handed

Use with AD300

Vertical adjustment 4.5mm, includes positive locking



AD500

Heavy Duty Offset Pivot

AD500-800(with AD500-FL800): door weight up to 800kg

AD500-1000(with AD500-FL1000): door weight up to 1000kg

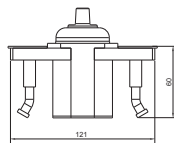
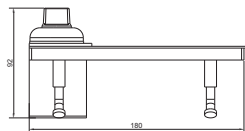
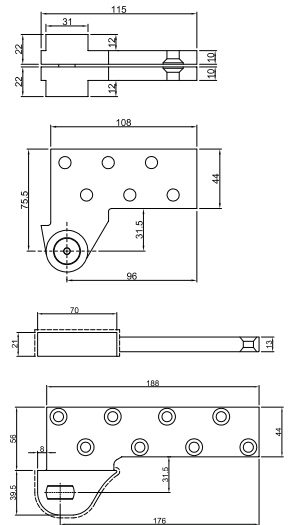
Specification:

- 1) Stainless steel 304, super anti-corrosive, durable and easy to clean.
- 2) Additional thrust bearing for greater load capacity, dust proof.
- 3) For wood door and metal door, weight to 1000kg
- 4) Door edges must be beveled in 1/8" in 2"
- 5) Minimum door thickness 50mm
- 6) Vertical adjust 4.5mm
- 7) Non Handed
- 8) Finish: SSS, PSS, PVD

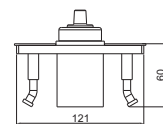
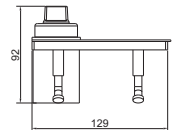
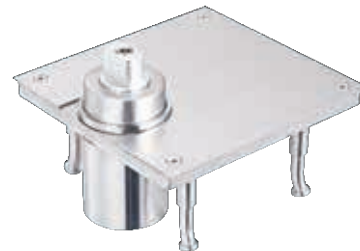
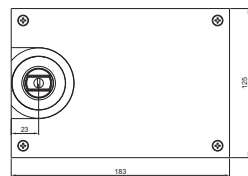


Certificate:

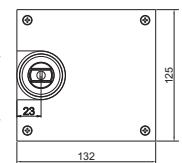
ANSI/BHMA A156.4, C07111, grade 1



AD500-FL1000



AD500-FL500



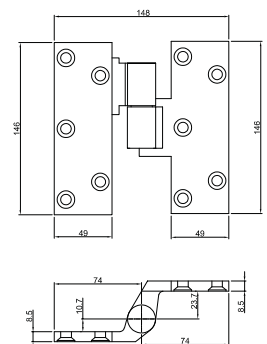
AD500-2L H/RH

Intermediate Pivot

1. ANSI/BHMA NO: C07321/C07371
2. Full Mortise
3. Stainless steel 304, super anti-corrosion, durable, and easy to clean.
4. Aids in installing floor closers and bottom pivots, Maintains door alignment
5. Handed
6. Vertical adjust 4.5mm

Marks:

Use for door heights over 7'0" and one every 2'6" or Use for door weight over the pivot set limit.
One additional for every additional 46kg



Butt Hinges



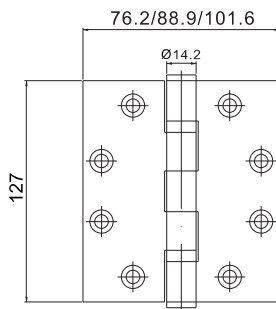
Butt hinges

504030-2BB, 503530-2BB, 503030-2BB
 454530-2BB, 454030-2BB
 404030-2BB, 403530-2BB, 403030-2BB

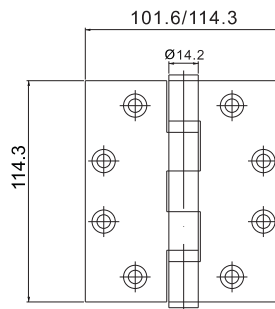
Material: stainless steel
 Finishes: SSS, PSS, PVD



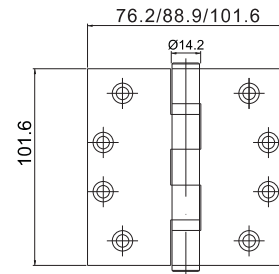
Certificate:
 1) EN1935
 2) EN1634, Fire rated



504030-2BB
 503530-2BB
 503030-2BB



454530-2BB
 454030-2BB



404030-2BB
 403530-2BB
 403030-2bb